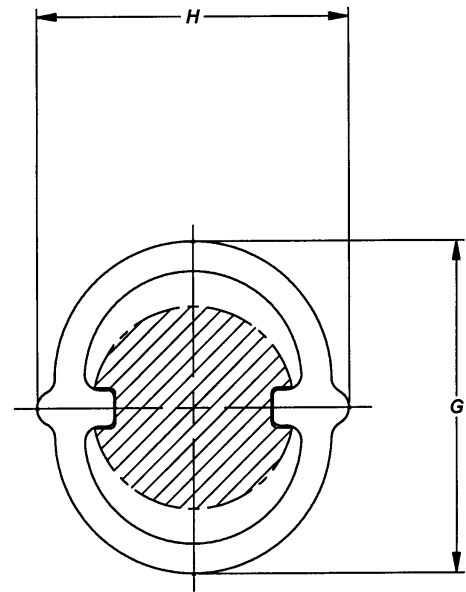
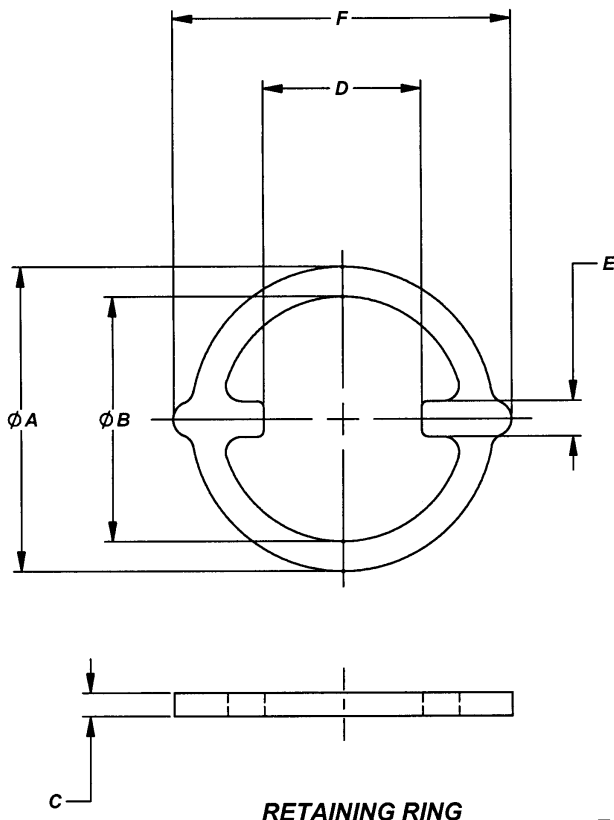


MANUFACTURE OF THE PROPRIETARY PARTS SHOWN HERE WITHOUT WRITTEN CONSENT IS ABSOLUTELY PROHIBITED



**SHOWN AFTER  
CRIMP ONTO SCREW**

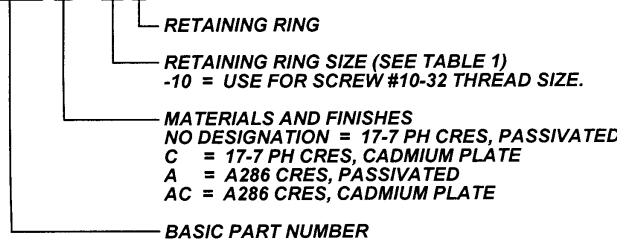
**RETAINING RING**

**TABLE 1**

DASH NUMBER	Ø A	Ø B	C	D REF	E REF	F	G REF	H REF	APPROX. WEIGHT PER 100 PCS. LBS.
-06R	.244 .238	.181 .175	.022 .018	.096	.030	.280	.260	.250	.01
-08R	.283 .277	.213 .207	.027 .023	.123	.036	.317	.300	.290	.02
-10R	.316 .310	.236 .230	.032 .028	.148	.040	.355	.340	.325	.03
-4R	.393 .387	.317 .311	.032 .028	.204	.046	.435	.425	.400	.04
-5R	.496 .490	.398 .392	.037 .033	.257	.047	.538	.535	.485	.08
-6R	.551 .545	.460 .454	.037 .033	.320	.066	.593	.580	.550	.09
-7R	.623 .615	.522 .515	.044 .038	.382	.066	.664	.660	.620	.12

**NOTES; UNLESS OTHERWISE SPECIFIED:**

1. MATERIAL:
  - 1.1 17-7PH CRES PER MIL-S-25043 AND AMS5528.
  - 1.2 A286 CRES PER AMS5525, DESIGNATED BY LETTER "A".
2. HEAT TREAT:
  - 2.1 17-7 PH CRES HRC 42 MAXIMUM PER AMS2759/3.
  - 2.2 A286 CRES HRC 31 MINIMUM PER AMS2759 (140 KSI MINIMUM REF).
3. FINISH:
  - 3.1 PASSIVATED PER AMS2700.
  - 3.2 CADMIUM PLATED PER AMS-QQ-P-416, TYPE II, CLASS 2. DESIGNATED BY LETTER "C".
4. DIMENSIONS APPLY BEFORE PLATE.
5. THESE RETAINING RINGS ARE DESIGNED TO BE USED WITH CRIMP-ON TYPE CAPTIVE SCREWS.
6. INSTALLATION PROCEDURE PER ALCOA FASTENING SYSTEMS SALES DRAWING NUMBER CA2210T-().
7. PART CALLOUT EXAMPLE:
  - 7.1 CA2210 ( ) - 10 R



INTERIM DOCUMENT REVISION		
Rev.	Date	DAF#
J1	10/8/2018	117431

PROJECT NUMBER: 89-208, 90-028, 91-043A, 96-030 AND 96-041

APPROVED DATE <b>23 OCT 95</b>  REV. LETTER AND DATE <b>J 6 DEC 13</b>  DAF NUMBER <b>DAF 100513</b>	CURRENT DESIGN ACTIVITY: <b>ARCONIC</b> Arconic Fastening Systems <b>TRIDAIR PRODUCTS</b> 300 W. LOMITA BLVD. TORRANCE, CA. 90505	TITLE: <p style="text-align: center;"><b>RETAINING RING SOLID, CRIMP-ON TYPE</b></p>	CURRENT DESIGN ACTIVITY: <b>CAGE CODE: 29372</b> <b>SALES DRAWING NO.</b> <p style="text-align: center; font-size: 1.2em;"><b>CA2210()-()R</b></p> SHEET 1 OF 1
---	--	---	--

UNLESS OTHERWISE SPECIFIED DIMENSIONS ARE IN INCHES & ASME Y14.5M TOLERANCES: ANGLES DECIMALS = ±3° .XX = ±.02 .XXX = ±.010

S43883